

Double Bass

Joy to the world!

Lowell Mason, based on Handel
Arr. Calistri-Yeh, Rutter, Hocking

Majestically ♩=92

9

19

Verse 4

28

37

rit.

Once in royal David's city

Gauntlett

Arr. Mann, Willcocks, Hocking

Gently ♩=86



7



13



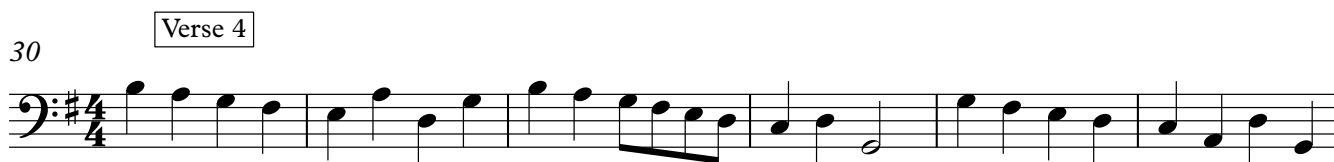
19



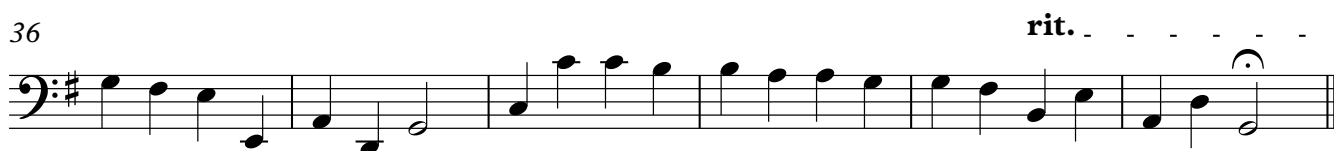
25



30



36



Silent night

Double Bass

Xavier Gruber arr. Calistri-Yeh, Hocking

Lullaby $\text{♩} = 92$



Double Bass

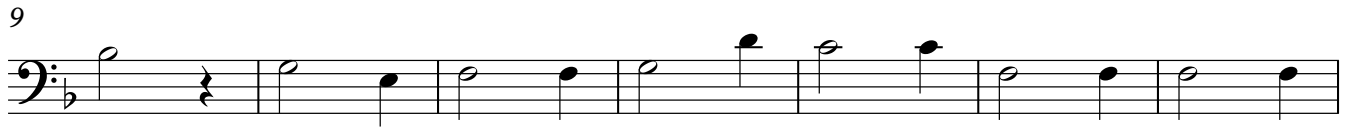
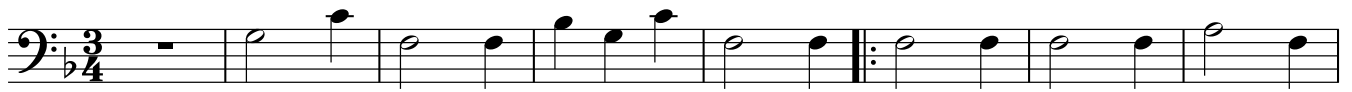
Away in a manger

Cradle Song (Kirkpatrick)

Arr. Calistri-Yeh, Hocking

Gently ♩=88

3 verses



Double Bass

Hark! the herald angels sing

Mendelssohn
Arr. Willcocks, Hocking

Verse 1

7

13

19

25

Verse 2

31

37

41

rit.

The First Noel

Double Bass

Trad. Arr. Calistri-Yeh, Hocking

♩=92



9



17



24



Double Bass

71

Verse 4



77



83



88

rit.



f

O little town of Bethlehem (Forest Green)

Double Bass

Arr. RWV, Hocking

Slowly ♩=92

5

Verses 1 and 2



11



17



22

Verse 3

15

Verse 4



42



48

rit.



We three kings of Orient are

Double Bass

Arr. Calistri-Yeh, Hocking

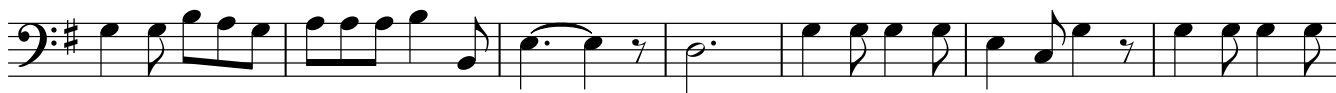
♩.=66

5

Verse 1



11



18



24

Verse 2



30



36



42

Verse 3



48



54



60

Verse 4



66



72



78

Verse 5



84



90



Double Bass

O holy night

Dwight
Arr. Calistri-Yeh, Hocking

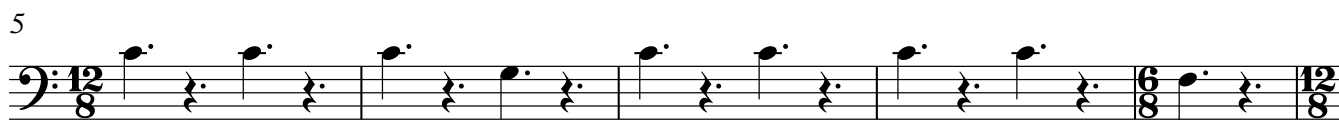
Moderato $\text{♩} = 60$




12/8 12/8 6/8 12/8

pizz *pizz*

5

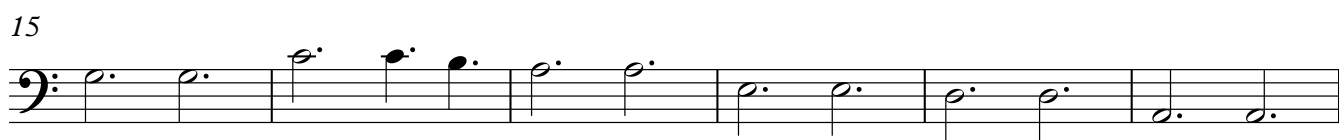


10



arco

15



21

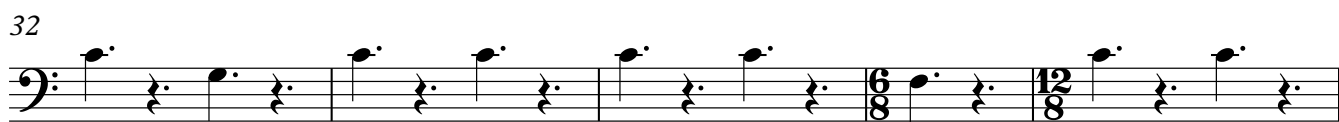


27



pizz

32



37



arco

43



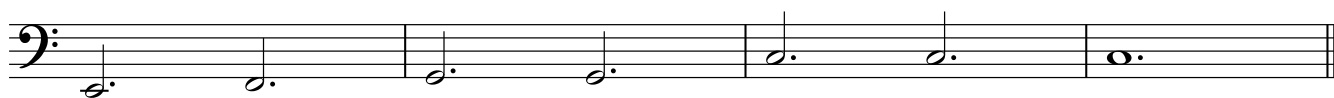
f

49



Double Bass

52



Double Bass

O come all ye faithful

Trad. arr. Willcocks, Hocking



7



13



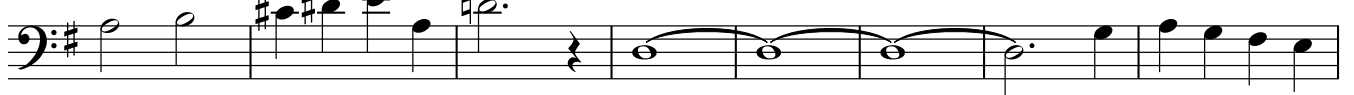
21



28



35



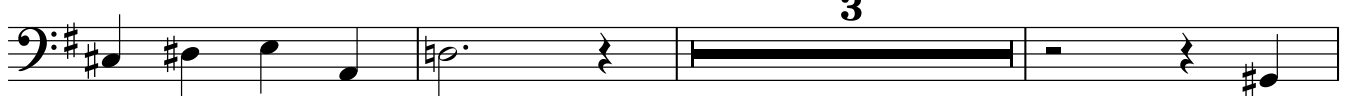
43



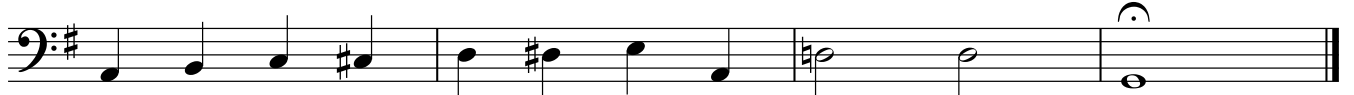
49



56



62



Double Bass **We wish you a merry Christmas**

Trad. arr. Hocking

Lively ♩=160 (one in a bar)

First musical staff in bass clef, 3/4 time signature, key of B-flat. It begins with a whole rest in the first bar, followed by quarter notes G2, A2, Bb2. The second bar contains a half note G2 and a quarter rest. The third bar has a half note G2 and a quarter note A2 beamed together, with a slur above them. The fourth bar has a half note G2 and a quarter note Bb2 beamed together, with a slur above them. A repeat sign follows, with the first ending consisting of a quarter note G2, a quarter rest, and a quarter note A2. The second ending consists of a quarter note G2, a quarter note A2, and a quarter rest.

9

Second musical staff, starting at measure 9. It contains quarter notes G2, A2, Bb2, G2, A2, Bb2, G2, A2, Bb2. The next bar has quarter notes G2, A2, Bb2, G2, A2, Bb2. The following bar has quarter notes G2, A2, Bb2, G2, A2, Bb2. The final bar of this staff has a first ending (quarter note G2, quarter rest, quarter note A2) and a second ending (quarter note G2, quarter note A2, quarter rest), both indicated by first and second endings brackets.

16

Third musical staff, starting at measure 16. It contains quarter notes G2, A2, Bb2, G2, A2, Bb2, G2, A2, Bb2, G2, A2, Bb2, G2, A2, Bb2, G2, A2, Bb2.

23

Fourth musical staff, starting at measure 23. It contains quarter notes G2, A2, Bb2, G2, A2, Bb2, G2, A2, Bb2, G2, A2, Bb2, G2, A2, Bb2, G2, A2, Bb2, G2, A2, Bb2.

31

rit.

Fifth musical staff, starting at measure 31. It contains quarter notes G2, A2, Bb2, G2, A2, Bb2, G2, A2, Bb2, G2, A2, Bb2, G2, A2, Bb2, G2, A2, Bb2, G2, A2, Bb2. The final bar has a half note G2 with a fermata above it.